

NIBIN Makes a Difference!

As a national database of digital images for fired cartridge cases, IBIS/NIBIN can provide potential leads and link gun crimes in real-time.

WSP has IBIS/NIBIN systems in Seattle, Tacoma, Spokane

There are over 30 contributing users in Washington State trained to enter into IBIS.

In Washington State alone there were over 700 Investigative leads generated by the NIBIN system in 2020.

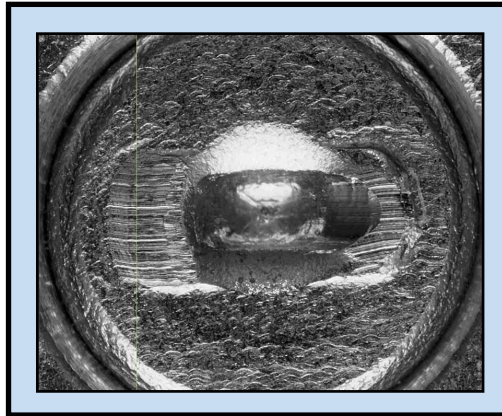
How to Increase the Program's Success

Collect fired cartridge cases at **ALL** shooting scenes (no matter how minor) and submit for imaging as soon as possible.

Ensure **ALL** recovered operable firearms are test fired, and the test fired cartridge cases are entered into IBIS.

Inoperable firearms suitable for IBIS entry should be submitted to the lab for repair and test firing.

Leads generated by NIBIN must have a follow up investigation and intra-agency communication.



Side by side comparison of breech face marks

Become IBIS Trained and Certified

We have multiple trainers available to help you become certified to enter fired cartridge cases into IBIS. Please contact one of our sites (below) to learn more or coordinate a training.

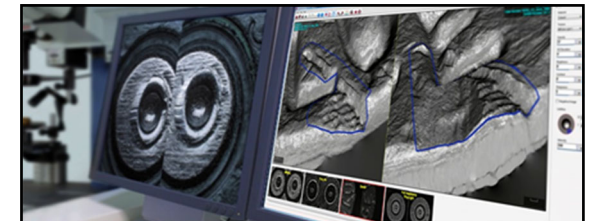
IBIS/NIBIN Acquisition Sites

<u>Location</u>	<u>NIBIN Technician</u>
Seattle Crime Laboratory 2203 Airport Way S., Ste. 250 Seattle, WA 98134	Malory Molt (206) 262-6014 Malory.Molt@wsp.wa.gov
Tacoma Crime Laboratory 2502 112th St. E. Tacoma, WA 98445	Tara Sewell (253) 538-3266 Tara.Sewell@wsp.wa.gov
Spokane Crime Laboratory 580 W. 7th St. Cheney, WA 99004	Devin Sontag (509) 625-5435 Devin.Sontag@wsp.wa.gov



Washington State Ballistic Identification Program IBIS/NIBIN

Linking Firearm Related Incidents using 3D Imaging Technology and Successful Partnering



What is IBIS/NIBIN?

IBIS - Integrated Ballistic Identification System



- Takes 3D/HD images of fired cartridge cases

NIBIN - National Integrated Ballistic Information Network

- After images are acquired by IBIS, NIBIN stores and correlates the images against previously submitted images of cartridge cases.

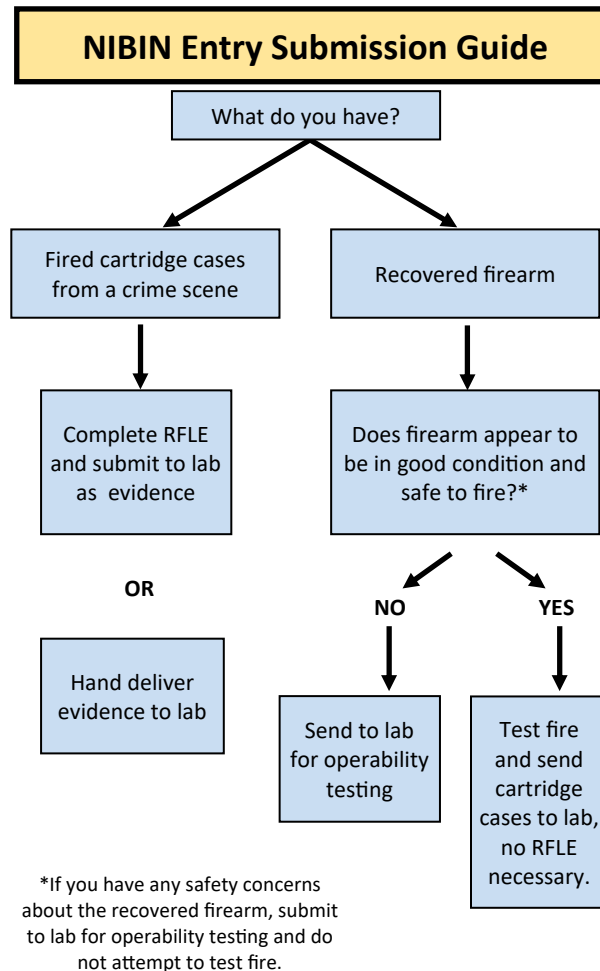
How it Works

Fired cartridge cases from a scene or test fired cartridge cases from recovered firearms are entered into IBIS. Within hours the cartridge cases are compared to other images of cartridge cases in the NIBIN database to search for possible matches.



The images are evaluated by technicians using a digital comparison tool.

Agencies are then notified of a potential link through a lead notification. A Request for Laboratory Examination (RFLE) for microscopic confirmation can be submitted and fulfilled by an examiner who will generate a comparison report.



If you have any questions regarding test firing a gun for NIBIN entry, or require test fire envelopes, please call or email your local NIBIN site and we will be happy to assist.

How to Submit Cartridge Cases for IBIS/NIBIN Entry

Complete a WSP [Request for Laboratory Examination](#) (RFLE) with a request for IBIS/NIBIN Entry.

Services

- Fired Cartridge Cases (evidence only) = NIBIN
- **Inoperable** firearms to test fire = NIBIN Test Fire

Evidence can also be hand delivered and entered into NIBIN without a transfer of custody. Contact a NIBIN technician for more information.

WSP issues special envelopes specifically for test fired cartridges. Please complete all fields. **2 test fired cartridge cases per firearm are required.**

All fields required		LAB USE ONLY	
Date Seized	Date Received	NIBIN Entry Date	
Case Information			
Agency			
Contact Information (Name, E-Mail, Phone)			
Agency Case #	Item #		
Date of Offense	Type of Offense	Location of Offense	
Firearm Information			
Caliber	Make		
Model	Type (Pistol, Rifle, Shotgun)		
Serial Number	<input type="checkbox"/> OBLITERATED	Date of Firearm: Returned to Owner Auction Destroyed Unknown	
Comments (Optional)			
TEST FIRES ARE NOT CONSIDERED EVIDENCE, AND WILL BE DISCARDED AFTER NIBIN ENTRY Washington State Patrol			

Important Notes

- *Cartridge cases from derringers and revolvers are typically not entered into NIBIN
- *Bullets are not entered into NIBIN
- *Please do not send requests for evidence **older than 2 years** without contacting the lab.

Firearms are not routinely accepted for operability or NIBIN entry only. Inoperable or unsafe firearms will be accepted. For further questions, please contact your local lab.