

For Immediate Release

Captain Monica Alexander
Government and Media Relations

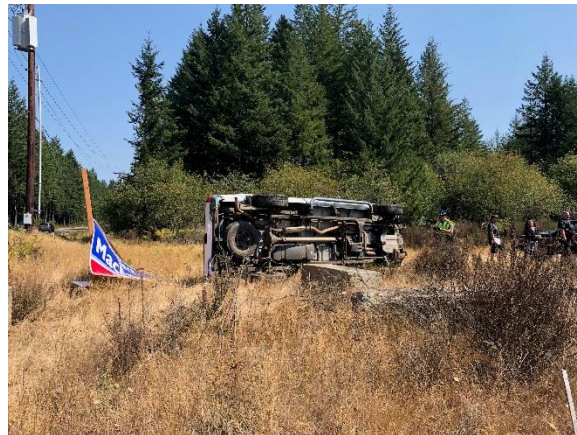
August 28, 2018

Contact: Trooper Chelsea A. Hodgson

Phone: (360) 265-1332

Email: Chelsea.Hodgson@wsp.wa.gov

Twitter: @wspd8pio



DUI Hit and Run Suspect Arrested After Crashing in Two Counties

Bremerton – A 56-year-old Silverdale man was arrested Tuesday under the suspicion of driving under the influence, hit and run and reckless driving after being involved in a two-car collision in Mason County and later crashing a second time in Kitsap County.

The first collision was reported at 11:54 a.m. at the intersection of northbound state Route 3 and state Route 300 in Belfair. The Silverdale man was allegedly driving a white 2004 GMC Sierra pickup truck from the Safeway parking lot onto northbound state Route 3, striking a 2013 Ford Flex traveling southbound on state Route 3. The Ford Flex was occupied by a family of five from Port Orchard: a 30-year-old male driver, 35-year-old female passenger and three children, ages four, three and one. None were injured.

Witnesses told Washington State Patrol (WSP) troopers they observed the GMC Sierra flee the area at a high rate of speed on northbound state Route 3. Shortly after, the second collision was reported two miles north on northbound state Route 3 in the area of Lake Flora Road involving the GMC Sierra pickup truck. Witnesses said the vehicle traveling at a high rate of speed before leaving the roadway to the right, rolling onto its side.

The driver sustained injuries to his back and was transported to Tacoma General Hospital in Tacoma. The charges of DUI and reckless driving will be forwarded to the Kitsap County Prosecutor's Office. The hit and run charge will be forwarded to the Mason County Prosecutor's Office.

District 8 serves Clallam, Grays Harbor, Jefferson, Kitsap, Mason, Pacific and Wahkiakum counties.

###

www.wsp.wa.gov